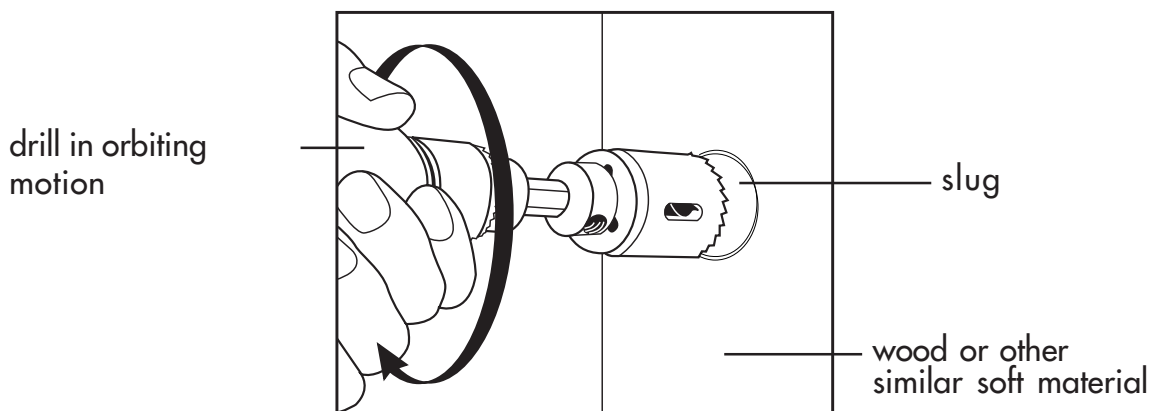


Reduce or Eliminate Jammed Slugs in Hole Saws with Cutting Technique

When cutting in wood, particularly thicker sections like 2 x 4s, it is often very difficult to remove the slug from inside the hole saw at the completion of the cut. Here is a simple cutting technique that allows easy removal of the slug.

1. Apply a slight orbiting motion to the drill motor as you feed the hole saw into the material.
2. Keep the orbiting motion small - within the diameter of the hole being cut - the hole will not be oversized.



Benefits

- The hole saw feeds through the material easier
- Sawdust is "augured" out of the cut better and keeps the kerf cleaner
- The hole saw cuts cooler - does not burn the inside diameter of the hole
- The outside diameter of the slug is reduced by the orbiting action
- The slug will either fall out of the hole saw or be easily pushed out with a screw driver
- No expensive, awkward ejector arbor is necessary

Note: *This technique works only on wood and other similar soft material.*